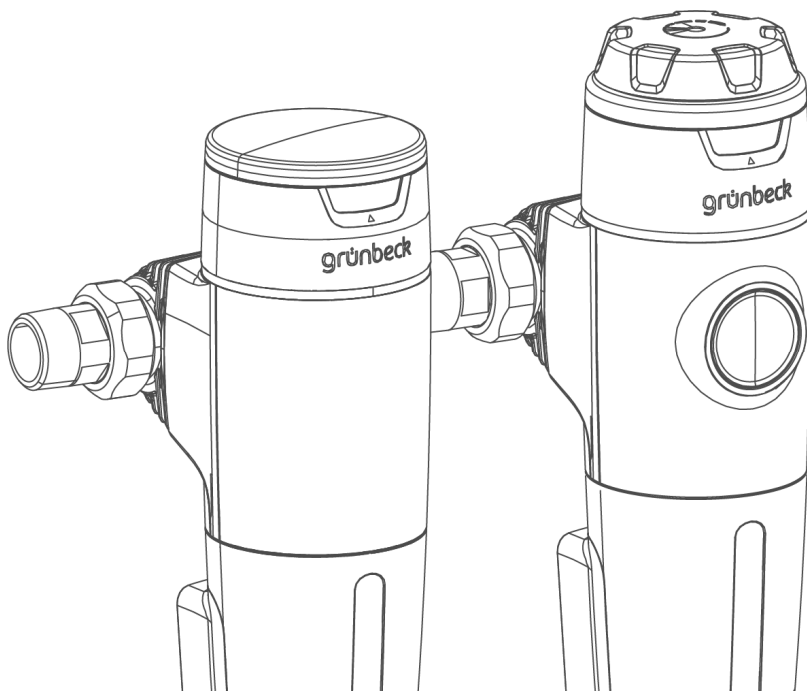


We understand water.



Filters | Automatic filters pureliQ:A,  
pureliQ:AD

Operation manual

grünbeck

Central Contact  
Germany

Sales  
Telefon 09074 41-0

Technical Service  
Phone +49 9074 41-333  
Fax +49 9074 41-120

Availability  
Monday to Thursday  
7:00 am – 6:00 pm

Friday  
7:00 am - 4:00 pm

Your local point of contact: see  
accompanying list of  
representatives

### **Copyright**

The manufacturer reserves the copyright to this manual. Without the written consent of Grünbeck Wasseraufbereitung GmbH, no part of this manual is allowed to be reproduced in any way, nor is any part allowed to be processed, duplicated or distributed using electronic systems.

Contraventions of the aforementioned requirements shall be subject to compensation in damages.

We reserve the right to modifications.  
© by Grünbeck Wasseraufbereitung GmbH

### **Translation of the original operation manual**

Edition of the manual: August 2018  
Order number: TD3-AA000en\_055

# Table of contents

<b>1</b>	<b>About this manual.....</b>	<b>4</b>			
1.1	Other applicable documents .....	4			
1.2	Target group .....	4			
1.3	Storage of the documents.....	4			
1.4	Symbols used .....	5			
1.5	Typographical conventions.....	6			
1.6	Validity of the manual .....	7			
1.7	Type plate.....	8			
<b>2</b>	<b>Safety .....</b>	<b>9</b>			
2.1	Safety measures.....	9			
2.2	Technical safety instructions.....	10			
2.3	Regulations.....	11			
2.4	Responsibilities of the specialist installer .....	11			
2.5	Responsibilities of the owner-user	12			
<b>3</b>	<b>Product description .....</b>	<b>13</b>			
3.1	Intended use .....	13			
3.2	Product components.....	14			
3.3	Functional description.....	15			
<b>4</b>	<b>Installation .....</b>	<b>16</b>			
4.1	Requirements in relation to the installation site .....	17			
4.2	Checking the scope of supply .....	18			
4.3	Installing the product.....	19			
<b>5</b>	<b>Start-up .....</b>	<b>22</b>			
5.1	How to start up the product.....	22			
5.2	Operating the backwash unit .....	23			
5.3	Setting the month display .....	24			
5.4	Setting pressure reducer (only pureliQ:AD).....	25			
5.5	Handing over the operation manual to the operator .....	26			
<b>6</b>	<b>Cleaning, inspection, maintenance .....</b>	<b>27</b>			
6.1	Cleaning.....	27			
6.2	Inspection and maintenance.....	27			
6.3	Wearing parts .....	28			
6.4	Service kits .....	29			
6.5	Spare parts .....	31			
<b>7</b>	<b>Faults .....</b>	<b>32</b>			
<b>8</b>	<b>Disposal .....</b>	<b>33</b>			
8.1	Packaging .....	33			
8.2	Product .....	33			
<b>9</b>	<b>Technical data .....</b>	<b>34</b>			
9.1	Automatic filter pureliQ:A.....	34			
9.2	Automatic filter pureliQ:AD .....	37			
<b>10</b>	<b>Other information.....</b>	<b>39</b>			
10.1	Explanation of terminology .....	39			
<b>11</b>	<b>Operation log.....</b>	<b>40</b>			

# 1 About this manual

## 1.1 Other applicable documents

The following documents also apply in the case of the automatic filters pureliQ:A und pureliQ:AD:

- The manuals of all accessories used shall apply.

## 1.2 Target group

This manual is intended for specialist installers and owners/users.

## 1.3 Storage of the documents

This manual and all other applicable documents must be kept so as to be available if required. Make sure that your specialist installer enters the proper start-up in chapter 11 the operation log.

## 1.4 Symbols used



This symbol identifies instructions that you must comply with for your personal safety.

---



This symbol identifies instructions that you must comply with in order to avoid damage to property.

---



This symbol identifies important information about the product or its handling.

---



This symbol identifies work that is only allowed to be carried out by specialist installers. In Germany, the installation company must be registered in an installation directory of a water supply company acc. to §12(2) AVB Wasser V (German Ordinance on General Conditions for the Supply of Water).

---



This symbol designates tasks that are only allowed to be performed by Grünbeck's technical service/authorised service company or by specialist installers trained by Grünbeck.

---



This symbol identifies work that is only allowed to be carried out by qualified electronics experts according to the VDE guidelines or according to the guidelines of similar local institutions.

---

## 1.5 Typographical conventions

The following typographical conventions are used in this manual:

### 1.5.1 Instructions

Single-step instructions or instructions where the sequence of the actions is unimportant are indicated as follows:

► Action

Multi-step instructions in which the sequence must be complied with are indicated as follows:

**1.** First step

- a** First action in the first step
- b** Second step of the first action

**2.** Second action

Results of an instruction are indicated as follows:

» Result

### 1.5.2 Lists

Bullet symbols used:

- First list point (level 1)
  - First bullet point (level 2)
  - Second bullet point (level 2)
- Second list point (level 1)

## 1.6 Validity of the manual

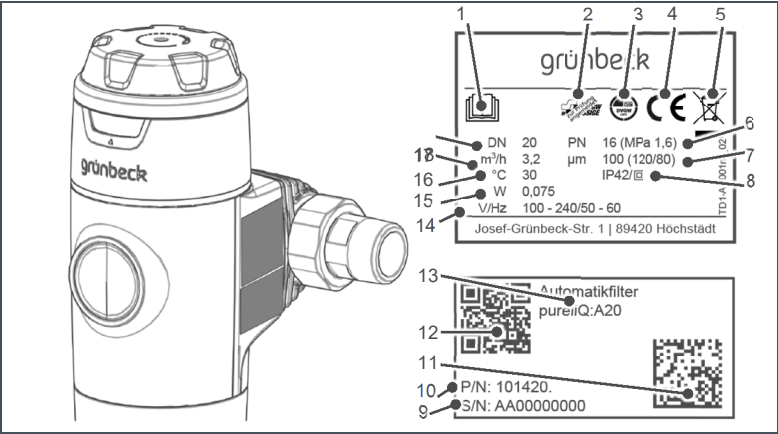
This manual applies to the following products:

- Automatic filter pureliQ:A
- Automatic filter pureliQ:AD

# 1.7 Type plate

Type plate is located on the right side of the housing as seen from the front.

Please specify the data shown on the type plate in order to speed up the processing of your enquiries or orders. Please enter the serial number below in order to have the necessary data handy whenever necessary.



Item	Designation	No.	Designation
1	Observe operation manual	2	SVGW mark of conformity (registered)
3	DVGW test mark	4	CE mark
5	Disposal information	6	Nominal pressure
7	Pore size	8	Protection/protection class
9	Serial no.	10	Order no.
11	Data matrix code	12	QR code
13	Product designation	14	Power supply
15	Max. electrical power input	16	Max. water temperature
17	Nominal flow rate	18	Nominal connection diameter

- Product designation: Automatic filter pureiQ: \_\_\_\_\_
- Order number: 101 \_\_\_\_\_
- Serial no.: \_\_\_\_\_



## 2 Safety



**WARNING:** Contamination of drinking water due to improper handling.

- Risk of infectious diseases.
- Only have installation and start-up carried out by a specialist installer.

### 2.1 Safety measures

- Carefully read this manual before operating your product.
- Install the product in a frost-free room. Otherwise, the system may suffer irreparable damage. The consequence can be a water damage.
- Only use genuine spare parts for maintenance or repair. If unsuitable spare parts are used, the warranty for your product will be void.
- Do not use products which have a damaged power supply cable. This can lead to injuries due to electric shock. Have damaged power supply cables replaced without delay.
- Mains cables are only allowed to be replaced by the manufacturer or authorised personnel.
- Comply with the hygiene instructions in chapter 6. Failure to comply can result in microbiological contamination of your drinking water installation.
- Only have persons working on your system that have read and understood the present manual and that are qualified to do such work due to their vocational training.

- Only operate the product if all components are installed properly.
- Safety device must never be removed, bridged or otherwise tampered with.
- Children are not allowed to play with the product.
- This product can be used by children over 8 years of age and persons with limited abilities or lack of experience if they are supervised or instructed in the safe use of the product and understand the resulting hazards.
- Cleaning and maintenance must not be carried out by children.

## 2.2 Technical safety instructions

This manual contains information and instructions that you must comply with for your own personal safety as well as to avoid damage to property. The information and instructions are highlighted by a warning triangle and have the following structure:



---

### **CAUTION:** Type and source of danger

- Possible consequences
  - Preventive measures
- 

The following signal words were defined subject to the degree of danger and can be used in the present document:

- **DANGER** means that serious or fatal injuries will occur if the corresponding precautionary measures are not taken.
- **WARNING** means that serious or fatal injuries may occur if the corresponding precautionary measures are not taken.

- **CAUTION** means that minor injuries may occur if the corresponding precautionary measures are not taken.
- **NOTE** (without a warning triangle) means that damage to property may occur if the corresponding safety measures are not taken.

## 2.3 Regulations

During installing and commissioning of the system, amongst other things comply with the following regulations and guidelines:

- Statutory regulations on environmental protection
- Provisions of the employers' liability insurance associations
- DIN EN 806 Specifications for installations inside buildings conveying water for human consumption
- VDI 6023 section 6

## 2.4 Responsibilities of the specialist installer

Comply with the following instructions to ensure the proper and safe functioning of the product:

- Only perform activities described in this manual.
- Perform all activities in accordance with all applicable standards and regulations.
- Brief the owner/user on the function and operation of the product.
- Advise the owner/user of the maintenance of the product.
- Instruct the owner-user about possible dangers that can arise during operation of the product.

## 2.5 Responsibilities of the owner-user

Comply with the following instructions to ensure the proper and safe functioning of the product:

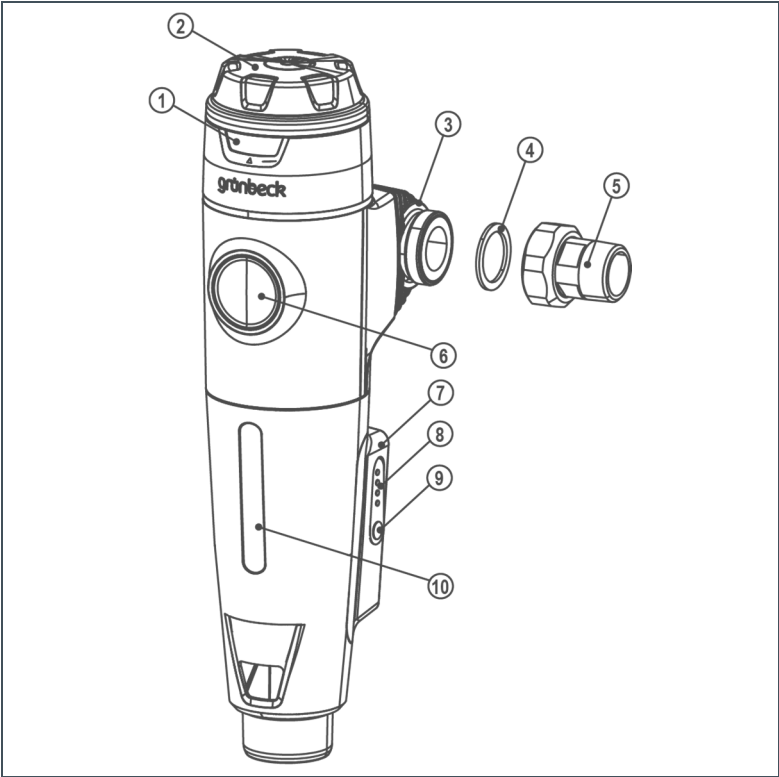
- Assign the installation and start-up to a specialist installer.
- Have the product explained to you by the specialist installer.
- Only perform activities described in this manual.
- Do not carry out any activities that are explicitly marked for a specialist installer.
- Only use this product as intended.
- Make sure that the required inspection and maintenance work is carried out.
- Keep this manual.

## 3 Product description

### 3.1 Intended use

- The automatic filters pureliQ:A and pureliQ:AD are designed for the filtration of drinking water.
- The automatic filter pureliQ:AD with pressure reducer in addition is suitable for the adjustment of the after-pressure on the withdrawal side.
- The filters can be used for positive pressure and negative pressure applications. A backwash and the adjustment of the after-pressure on the withdrawal side, however, are only possible when applied in the positive pressure range.
- The filters are not suitable for circulation water that is treated with chemicals.
- The filters are neither suitable for oils, greases, solvents, soaps and other lubricating media, nor for the separation of water-soluble substances.
- The filters are designed according to DIN EN 13443-1, DIN 19628 and DIN EN 1567 (only applies to the automatic filter pureliQ:AD) and are intended for installation in drinking water systems according to DIN EN 806-2 (installation directly after the water meter system).
- The filters protect the water pipes and connected water-carrying system parts from disturbances and corrosion damage due to undissolved impurities (particles) such as rust particles and sand.

### 3.2 Product components



No.	Designation	No.	Designation
1	Month display	2	Pressure reducer handwheel
3	Click connection flange	4	Seal
5	Water meter screw connection	6	Pressure gauge
7	Automatic unit	8	LEDs backwash intervals
9	Push-button	10	Inspection window

### 3.3 Functional description

The unfiltered drinking water flows into the filter from the inlet side and then from the outside in through the filter element and to the pure water outlet. Thus, foreign particles of  $> 100 \mu\text{m}$  in size are retained.

Depending on their size and weight, the foreign particles either stick to the filter element or they fall straight down into the filter cylinder.

The controller automatically releases the backwash as per the setting. Possible settings for the backwash intervals are 7, 30, 60 and 90 days. A backwash can be initiated manually at any time. The drain is opened by triggering a backwash. The water flows through the primary screen to the filter element and then flows through the filter element in reverse direction of standard filtration. Particles adhering to the filter element are freed and rinsed out to the drain.

The backwash process takes about 50 seconds. In case some particles still remain on the filter element, the backwash must be triggered again manually. Grünbeck recommends a backwash interval of 60 days.

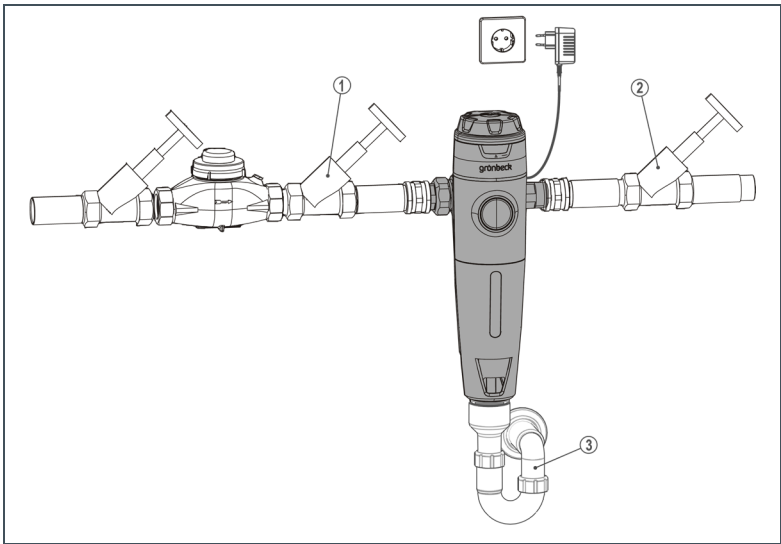
In the automatic filter pureliQ:AD, the flow-optimised pressure reducer, which is designed according to DIN EN 1567, enables the after-pressure on the withdrawal side to be set to 1 – 6 bar (factory setting: 4 bar).

# 4 Installation



The installation of a filter represents a major intervention into the drinking water system and may only be performed by a specialist installer.

The pureliQ filters are installed in accordance with DIN EN 806-2 and DIN 1988-200 in the cold water line downstream of the water meter and upstream of distribution lines or the devices to be protected.



Item	Designation	No.	Designation
1	Inlet shut-off valve	2	Outlet shut-off valve
3	Drain connection		



## 4.1 Requirements in relation to the installation site

Observe local installation directives, general guidelines and technical specifications. The installation site must be frost-proof and ensure the filter's protection from chemicals, dyes, solvents, vapours and direct sunlight.

The installation location must be away from heat sources (e.g. washing machines, boilers and hot water pipes).

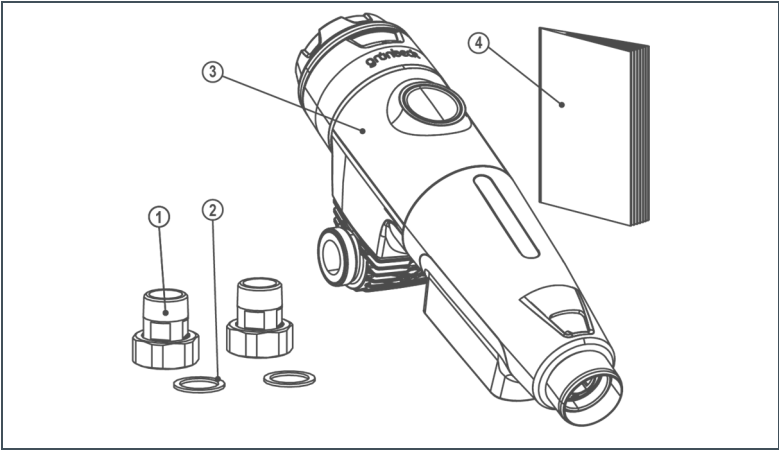
A drain connection DN 50 must be available to discharge the flushing water.

There must be push socket with earthing contact in the installation area.

The installation room must be provided with a floor drain. If none is available, an appropriate safety device has to be installed to avoid water damage. We recommend using a protectliQ:A.

The installation site must be well accessible for maintenance purposes.

## 4.2 Checking the scope of supply



No.	Designation	No.	Designation
1	Water meter screw fittings	2	Gaskets
3	Automatic filters pureliQ:A or pureliQ:AD	4	Operation manual

- Check the scope of supply for completeness and possible damage.

## 4.3 Installing the product



In order for the water line on both sides of the filter to be properly connected to the protective-equipotential bonding, we recommend establishing a corresponding electrical bypass according to DIN VDE 0100540.



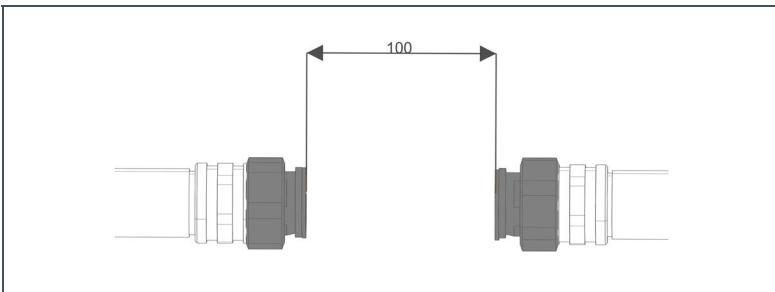
Use suitable tools for assembly and be careful not to scratch the housing with your tool.



The transparent plastic film serves as transport and dirt protection. We recommend leaving it on the device during assembly and the construction phase to prevent soiling of the white housing.

### 4.3.1 Installing the filter

1. Install the water meter screw connection in the pipe (the distance between the two seals must be 100 mm).



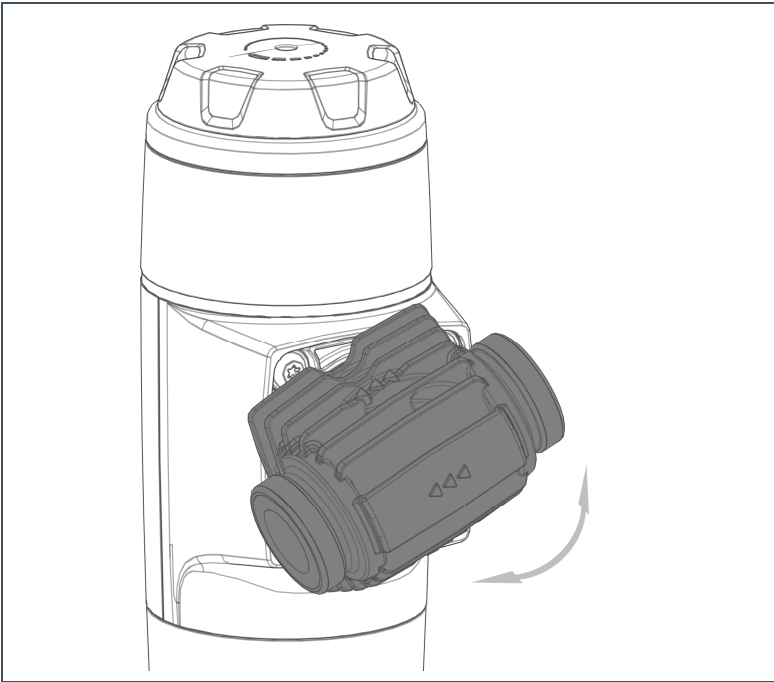
2. Leave the protective caps on the threads.



The rotatable click-type connection flange allows the filter to be adapted to any flow direction given on site.

---

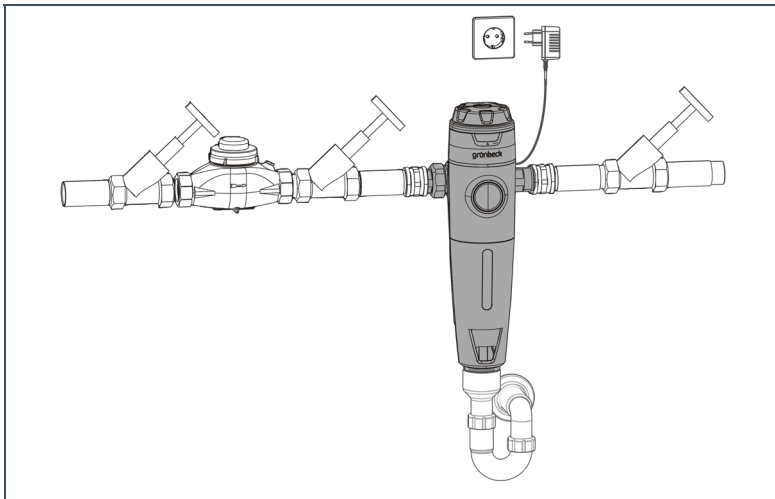
3. Check the flow direction given on site.
4. Rotate the click-type connection flange to the position suitable for your flow direction (marking on click-type connection flange).



5. Remove the protective caps.
6. Install the filter without stress and tighten the union nuts.

### 4.3.2 Attaching the backwash connection

#### Discharge of backwash water with drain and trap



- Install the drain connection (not included in the scope of supply) at the lower outlet of the filter.



The free outlet is already integrated in the filter.

## 5 Start-up



---

The start-up is only allowed to be carried out by a specialist.

---

### 5.1 How to start up the product

1. Open the shut-off valves.
2. Open the nearest tap after the filter as far as it will go.
3. Check the filter for leaks.
4. Connect the mains plug to the socket.
  - » LED 60d lights up (factory setting).
  - » The filter is in operation



---

The filter does not automatically backwash during the initial start-up, but waits until the set interval is reached. We therefore recommend triggering a backwash manually.

---



---

The interval counter is then set to zero. The next backwash takes place at the set interval.

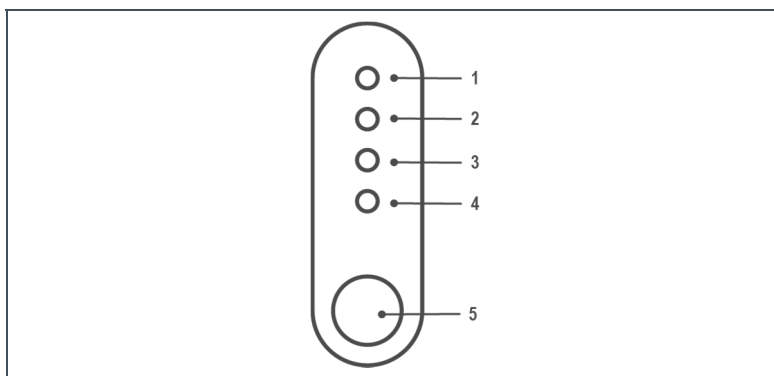
---

5. Trigger a backwash manually (refer to chapter 5.2.2).
  - » The filter is vented by backwashing.

## 5.2 Operating the backwash unit

The filters pureliQ:A and AD automatically trigger backwashes at the set intervals.

### 5.2.1 Setting the backwash interval



Item	Designation	No.	Designation
1	LED element 90d	2	LED element 60d
3	LED element 30d	4	LED element 7d
5	Push-button		

- Press the button repeatedly until the desired backwash interval is set.
  - » The corresponding LED lights up.
  - » The filter automatically backwashes at the set interval.

## 5.2.2 Triggering a backwash manually

► Press the button for 3 seconds.

» A backwash is initiated.



If the electrical power supply is interrupted, the filter automatically completes any backwash that may be in progress.

---



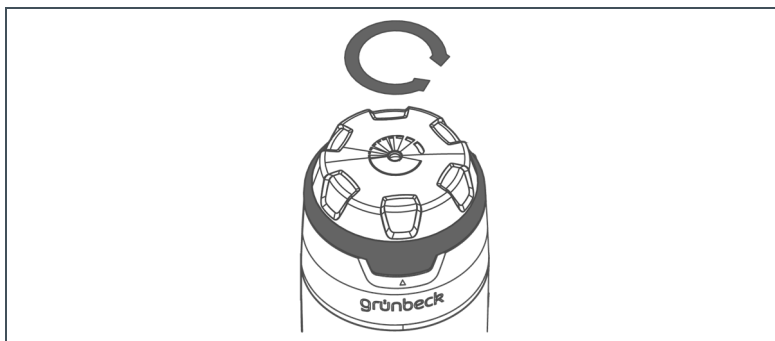
During the initial start-up or after a longer interruption of the electrical power supply, the backwash protection will only be available again after approx. 5 minutes.

---

## 5.3 Setting the month display

In order not to miss a check date, you can set the next date for checking by turning the month display.

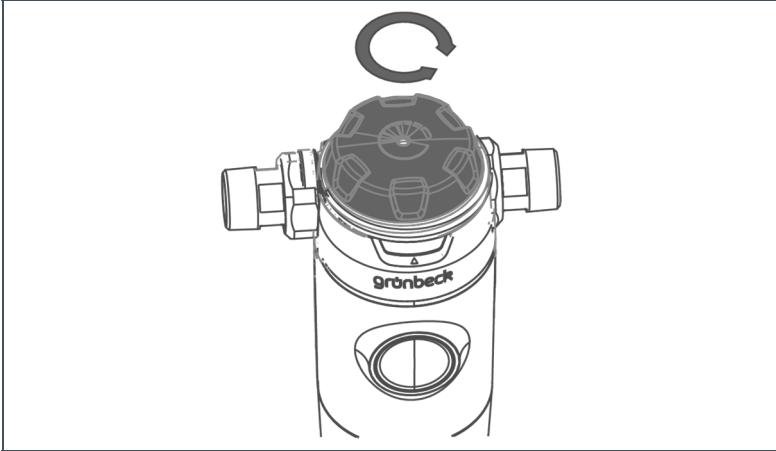
► Turn the ring above the month display until the desired month is shown in the month display.





## 5.4 Setting pressure reducer (only pureliQ:AD)

The factory setting for the pressure reducer is 4 bar. You can change this value as follows:



1. Open the withdrawal point.
2. Set the desired after-pressure on the handwheel for pressure reducer by turning it.
3. Read off the measured actual after-pressure at the pressure gauge on the front of the housing.
4. Close the withdrawal point.

## 5.5 Handing over the operation manual to the operator

When handing over the product, proceed as follows:

1. Inform the owner/user how the filter works.
2. Hand over all documents to the owner/user for keeping.
3. Use the manual to brief the owner/user, and answer any questions.
4. Inform the owner/user about the need for inspections and maintenance.

## 6 Cleaning, inspection, maintenance

### 6.1 Cleaning



---

**NOTE:** Do not clean the filter with alcohol or cleaning agents containing solvents.

- These substances will damage components made of plastic.
  - ▶ Use a mild soap solution for external cleaning and flush the parts well.
- 

### 6.2 Inspection and maintenance

Inspection and maintenance are not necessary for automatic filters.

We recommend checking the filter every six months.

1. Check the filter for leaks
2. Trigger a backwash manually.
3. Check the mains cable for damage.

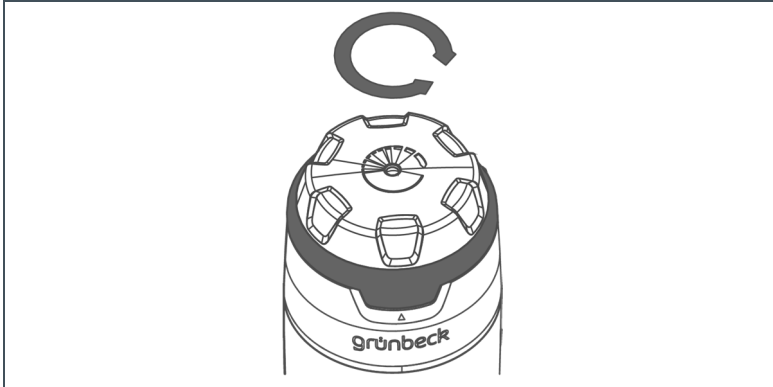


---

Mains cables are only allowed to be replaced by the manufacturer or authorised personnel.

---

4. Enter the work performed into the operation log in chapter 11.
5. Set the date for the next check (6 months) by setting the month display.



## 6.3 Wearing parts



---

**NOTE:** Danger of damaging the system if unsuitable wearing parts are used.

- Risk of functional impairment, malfunctions and loss of warranty.
  - ▶ Only use genuine wearing parts.
- 

Seals are wearing parts.



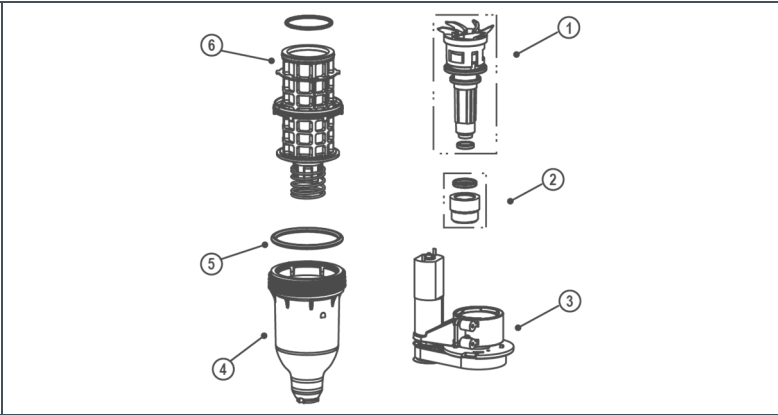
---

Although these parts are wearing parts, we grant a limited warranty period of 6 months for them.

---

## 6.4 Service kits

### 6.4.1 Service kits for automatic filter pureliQ:A

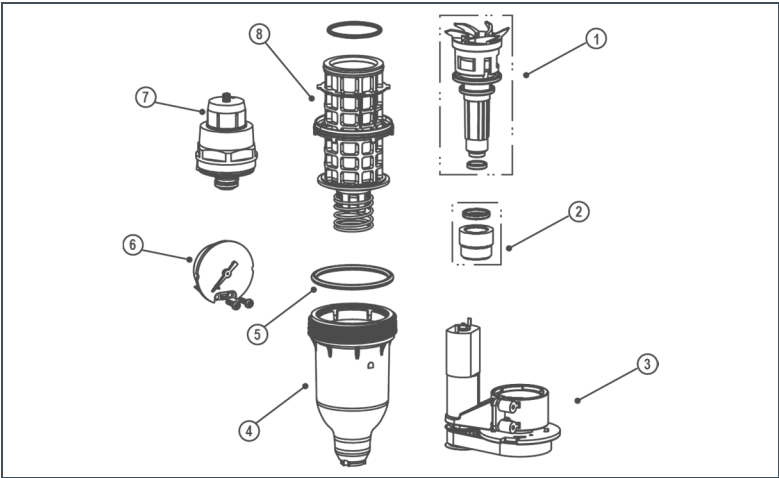


Item	Designation	No.	Designation
1	Backwash valve incl. seals	2	Fastening nut incl. seal
3	Automatic drive	4	Filter cylinder
5	Cylinder O-ring	6	Filter element

Designation	consisting of:	Order no.	Recommended replacement interval
Service kit I	• Filter element 100 µm incl. seal	101 694e	5 years
	• Cylinder O-ring		
	• Backwash valve incl. seals		
	• Fastening nut incl. seal		
Service kit II	• Service kit I	101 696e	10 years
	• Filter cylinder		
	• Automatic drive		
Tools required			
Strap wrench		105 805	
Allen key 10			

BA\_TD3-AA000en\_055\_pureliQ-A.docx

6.4.2 Service kits for automatic filter pureliQ:AD



Item	Designation	No.	Designation
1	Backwash valve incl. seals	2	Fastening nut incl. seal
3	Automatic drive	4	Filter cylinder
5	Cylinder O-ring	6	Pressure gauge
7	Pressure reducer	8	Filter element

Designation	consisting of:	Order no.	Recommended replacement interval
Service kit III	<ul style="list-style-type: none"><li>• Service kit I</li><li>• Pressure reducer</li><li>• Pressure gauge</li></ul>	101 697e	5 years
Service kit IV	<ul style="list-style-type: none"><li>• Service kit III</li><li>• Filter cylinder</li><li>• Automatic drive</li></ul>	101 698e	10 years
Tools required			
Strap wrench		105 805	
Allen key 10			
Pipe socket wrench		104 805	
TORX T8 (pressure gauge)			
TORX T10 (pressure reducer adjusting cap)			

## 6.5 Spare parts



---

**NOTE:** Risk of damage to the system if unsuitable spare parts are used.

- There is a risk of functional impairments, malfunctions and loss of warranty.
  - ▶ Only use genuine spare parts.
-

# 7 Faults



**WARNING:** Risk of contaminated drinking water due to unintentional, strong reduction of pressure.

- Risk of infectious diseases.
- Remedy this malfunction immediately.

Fault	Explanation	Remedy
The water pressure at the withdrawal point is too low (pressure loss too high).	The shut-off valves are not open completely.	Open the shut-off valves completely .
	The filter element is fouled.	Carry out a backwash.
Taste of the treated water negatively affected.	Inappropriately long period of non-use (standstill).	Draw off water for a few minutes.
		Carry out a backwash.
Solids in the filtered water.	Inappropriately high flow rate through the filter.	Contact the specialist installer or Grünbeck's technical service.
	Filter element damaged or not properly installed.	Contact the specialist installer or Grünbeck's technical service.
Water loss from the system.	Faulty joint.	Check the filter housing for damage or leaks.
		Contact the specialist installer or Grünbeck's technical service.
All four LEDs flash <ul style="list-style-type: none"><li>• Timeout during the backwash procedure (&gt; 115 s)</li><li>• Timeout when starting the backwash</li></ul>	Valve blocked	Carry out a backwash. If this does not remedy the fault, contact the specialist installer or Grünbeck's technical service.
	Motor defective	
	Timing belt defective	
	Defect of the microswitch during the backwash	
Uppermost LED 90d flashes	Defect of the microswitch	Carry out a backwash. If this does not remedy the fault, contact the specialist installer or Grünbeck's technical service.



## 8 Disposal

- Comply with the applicable national regulations.

### 8.1 Packaging

- Dispose of the packaging in an environmentally sound manner.

### 8.2 Product



If this symbol is on the product (crossed-out rubbish bin), the European Ordinance 2012/19/EU applies. This means that this product or the electric and electronic components are not allowed to be disposed off in the household waste.

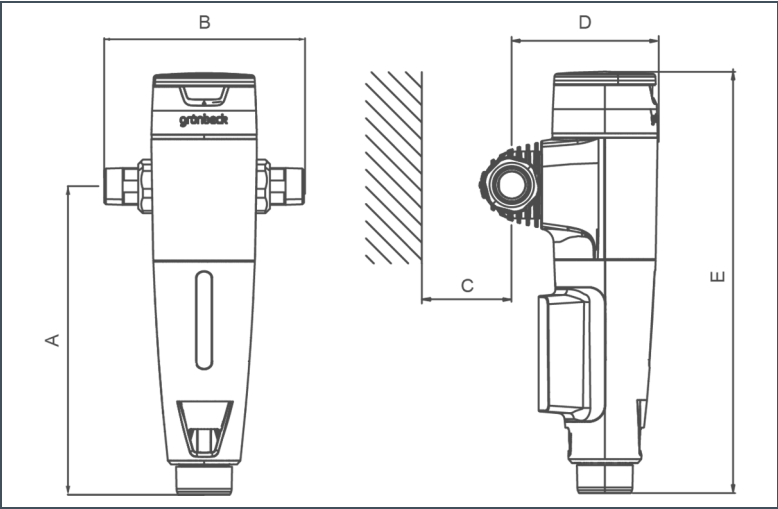
- Please inform yourself about the local regulations regarding the separate collection of electric and electronic products.
- Use the available collection facilities for the disposal of your product.




Information about the collection facilities for your product is available at the town council, the public legal disposal company, an authorized location for disposal of electrical and electronic products or your waste disposal.

# 9 Technical data

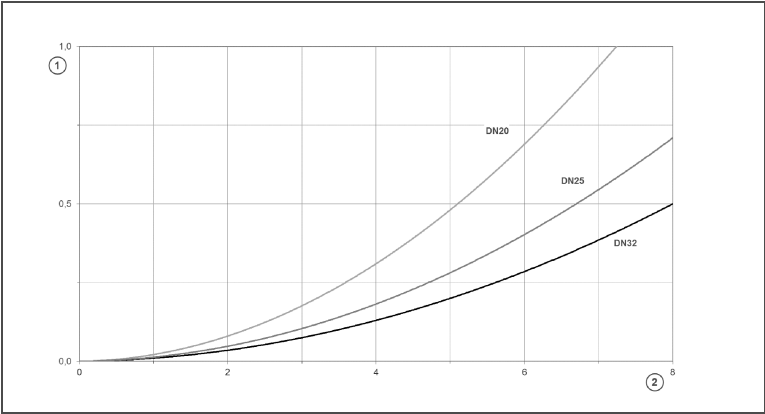
## 9.1 Automatic filter pureliQ:A



Connection data		pureliQ:A		
Nominal connection diameter		DN 20	DN 25	DN 32
Connection diameter		3/4"	1"	1 1/4"
Drain connection		DN 50		
Power supply	[V]/[Hz]	100 – 240/50 – 60		
Electrical power consumption				
Operation = max./standby	[W]	2/0.075		
Protection/protection class		IP42/ 		
Dimensions and weights				
A Installation height up to centre of connection	[mm]	285		
B Installation length with/without screw connection	[mm]	185/100	182/100	191/100

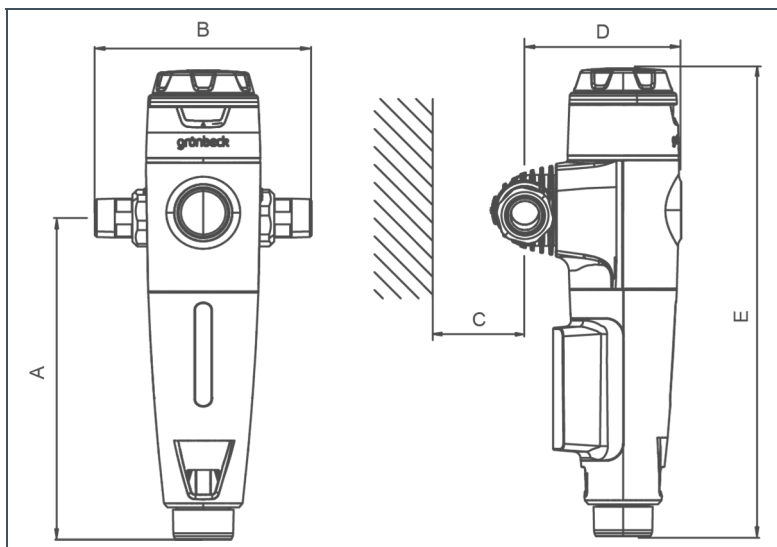
Dimensions and weights				
C Min. distance to wall	[mm]	50		
D Installation depth up to centre of connection	[mm]	135	135	145
E Total height	[mm]	385		
Empty weight	[kg]	1.8	2.0	2.2
Operating weight, approx.	[kg]	2.3	2.5	2.7
Performance data				
Nominal flow at $\Delta p$ 0.2 (0.5) bar	[m³/h]	3.2 (5.1)	4.2 (6.7)	5.0 (8.0)
KV value	[m³/h]	7.2	9.5	11.3
Pore size	[µm]	100		
Largest/smallest pore size	[µm]	120/80		
Operating pressure	[bar/MPa]	2 – 16/0.2 – 1.6		
Nominal pressure		PN 16		
General				
Backwash water volume at 4 bar inlet pressure	[l]	approx. 14		
Water temperature	[°C]	5 – 30		
Ambient temperature	[°C]	5 – 40		
DVGW registration number		NW-9301CT0031		
SVGW certificate number		pending		
Order no.		101 420	101 425	101 430

Automatic filter pureliQ:A pressure loss curve



Item	Designation	No.	Designation
1	Differential pressure [bar]	2	Flow rate [m³/h]

## 9.2 Automatic filter pureliQ:AD



Connection data		pureliQ:AD		
Nominal connection diameter		DN 20	DN 25	DN 32
Connection diameter		¾"	1"	1¼"
Drain connection		DN 50		
Power supply	[V]/[Hz]	100 – 240/50 – 60		
Electrical power consumption	[W]	2/0.075		
Operation = max./standby				
Protection/protection class		IP42/ □		
Dimensions and weights				
A Installation height up to centre of connection	[mm]	285		
B Installation length with/without screw connection	[mm]	185/100	182/100	191/100
C Min. distance to wall	[mm]	50		
D Installation depth up to centre of connection	[mm]	135	135	145

Dimensions and weights				
E Total height	[mm]	405		
Empty weight	[kg]	2.0	2.2	2.4
Operating weight, approx.	[kg]	2.5	2.7	2.9
Performance data				
Flow rate as per DIN EN 1567	[m³/h]	2.3	3.6	5.8
Pore size	[µm]	100		
Largest/smallest pore size	[µm]	120/80		
Nominal pressure		PN 16		
General				
Backwash water volume at 4 bar inlet pressure	[l]	approx. 14		
Water temperature	[°C]	5 – 30		
Ambient temperature	[°C]	5 – 40		
DVGW registration number		NW-9311CT0032		
SVGW certificate number		pending		
Order no.		101 470	101 475	101 480

# 10 Other information

## 10.1 Explanation of terminology

<b>Filter element</b>	Part of the filter that ensures the retention of the particles.
<b>Pore size</b>	The filter's ability to retain particles and suspended matter of a certain size range, regardless of the type of filter material. It is defined by the upper and lower filtration fineness
<b>Nominal flow rate</b>	Flow rate at which, with a clean filter, either the pressure loss does not exceed 50 kPa (0.5 bar) or the filter surface loading does not exceed the maximum specified value (whichever value is lower)
<b>Upper filtration fineness</b>	the number indicates the particle size of a material in $\mu\text{m}$ which passes through the filter under test conditions with a mass fraction of 10%
<b>Drinking water</b>	Drinking water is any water that is intended to be used in the domestic environment for drinking and all other food preparation purposes, for personal hygiene and cleaning as well as for cleaning objects that do not only temporarily come into contact with foodstuffs or the human body.
<b>Lower filtration fineness</b>	the number indicates the particle size of a material in $\mu\text{m}$ which passes through the filter under test conditions with a mass fraction of 90 %

## 11 Operation log

- Product designation: Automatic filter pureliQ: \_\_\_\_\_
- Order no.: 101 \_\_\_\_\_
- Serial no.: \_\_\_\_\_

[illegible]



# EC Declaration of Conformity

In accordance with the EU Low-Voltage Directive 2014/35/EU, Appendix IV



This is to certify that the system designated below meets the safety and health requirements of the applicable European guidelines in terms of its design, construction and execution.

This certificate will become invalid if the system is modified in a way not approved by us.

**Automatic filter pureliQ:A / AD**

**Serial no.: See type plate**

The aforementioned system also complies with the following directives and provisions:

- EMC (2014/30/EU)

The following harmonised standards have been applied:

- DIN EN 61000-6-2:2006-03
- DIN EN 61000-6-3:2011-09
- DIN EN 60335-1
- 

The following standards and regulations have been applied:

- DIN EN 13443-1:2007-12
- DIN 31000/VDE 1000:2017-04
- DIN 19628:2007-07

Responsible for documentation:

Dipl.-Ing. (FH) Markus Pöpperl

Manufacturer

Grünbeck Wasseraufbereitung GmbH  
Josef-Grünbeck-Str. 1  
89420 Hoechstädt  
Germany

Hoechstädt; Germany, 16 November 2017

Dipl. Ing. (FH) Markus Pöpperl

Head of Department for Product Implementation and Product Launch

# Index

---

## ***B***

Backwash..... 15, 32

---

## ***C***

Cleaning..... 27, 39

---

## ***D***

Disposal ..... 33

---

## ***F***

Fault..... 32  
Filter element ..... 15, 29, 30, 32, 39  
Filtration ..... 13, 15

---

## ***I***

Inspection..... 27  
Installation..... 9, 11, 12, 16

---

## ***M***

Maintenance ..... 5, 9, 11, 12, 27

---

## ***P***

Pressure reducer 13, 14, 15, 25, 30

---

## ***S***

Service kit ..... 29, 30  
Spare parts ..... 9, 31

---

## ***T***

Technical specifications ..... 34

---

## ***W***

Wearing parts..... 28



Grünbeck Wasseraufbereitung GmbH  
Josef-Grünbeck-Str. 1  
89420 Hoechstädt  
Germany



+49 9074 41-0



+49 9074 41-100

[info@gruenbeck.com](mailto:info@gruenbeck.com)  
[www.gruenbeck.com](http://www.gruenbeck.com)



For more information, go  
to [www.gruenbeck.com](http://www.gruenbeck.com)